

# Executive Summary: The PMO Operating Model Wheel

## Purpose

The **PMO Operating Model Wheel** provides a structured, strategic framework for transforming a Project Management Office (PMO) from a reactive reporting function into a proactive, value-driven partner. It defines how governance, planning, people, and outcomes align to enable predictable delivery across programmes and portfolios.

## Core Concept

At its centre, the Wheel represents the PMO's purpose — *"Enabling predictable, value-driven delivery."* Surrounding this are four interconnected domains that form the foundation of a modern PMO:

Domain	Focus	Key Outcomes
<b>Governance &amp; Assurance</b>	Confidence, consistency, control	Stakeholder trust, transparency, and disciplined decision-making
<b>Planning &amp; Control</b>	Structure, visibility, predictability	Reliable delivery, risk management, and performance tracking
<b>People, Skills &amp; Culture</b>	Capability, collaboration, leadership	Empowered teams, continuous learning, and strong engagement
<b>Value, Strategy &amp; Outcomes</b>	Alignment, measurement, improvement	Strategic impact, measurable benefits, and continuous improvement

## Why It Matters

A PMO without structure becomes reactive, focusing on reporting rather than results. A defined operating model creates strategic alignment — connecting governance, planning, people, and value to deliver measurable outcomes. This model strengthens organisational maturity and elevates PMO credibility.

## How to Use It

1. **Map current PMO capabilities** to the four domains.
2. **Identify gaps and overlaps** to reveal improvement opportunities.
3. **Prioritise enhancements** based on strategic impact.
4. **Embed the model** into delivery cycles, governance frameworks, and performance reviews.

## The Impact

Implementing the PMO Wheel drives:

- Predictable delivery across programmes and portfolios.
- Stronger alignment between strategy and execution.
- Elevated PMO credibility and stakeholder trust.
- Continuous improvement through shared learning.

## Next Steps

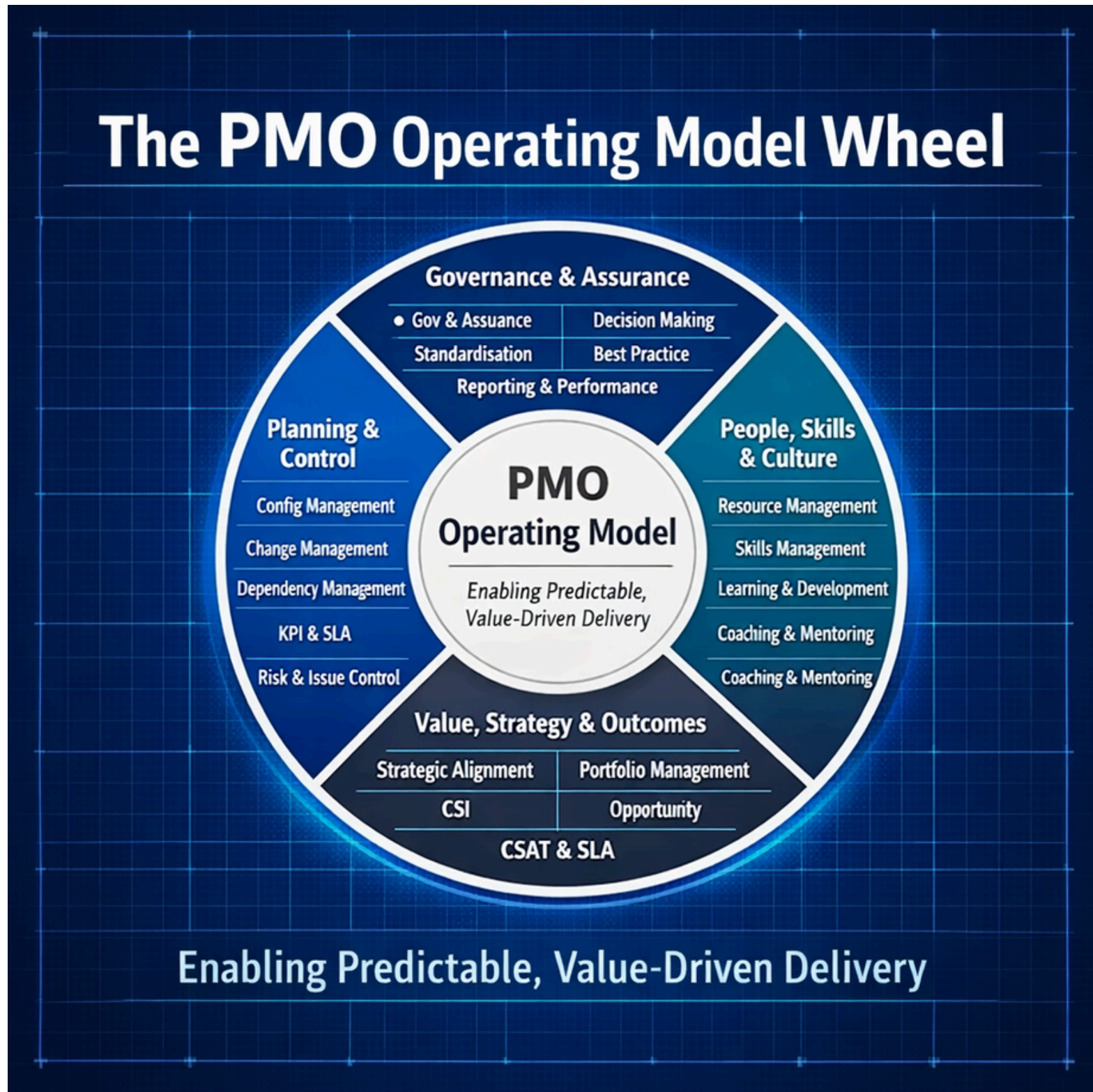
Download the full **PMO Operating Model v1.0** to access quadrant definitions, implementation guidance, and maturity assessment criteria. Optimised for LinkedIn, presentation decks, and PMO training materials.

**Tim Williams Consulting Ltd**

Helping organisations deliver predictable, value-driven outcomes.

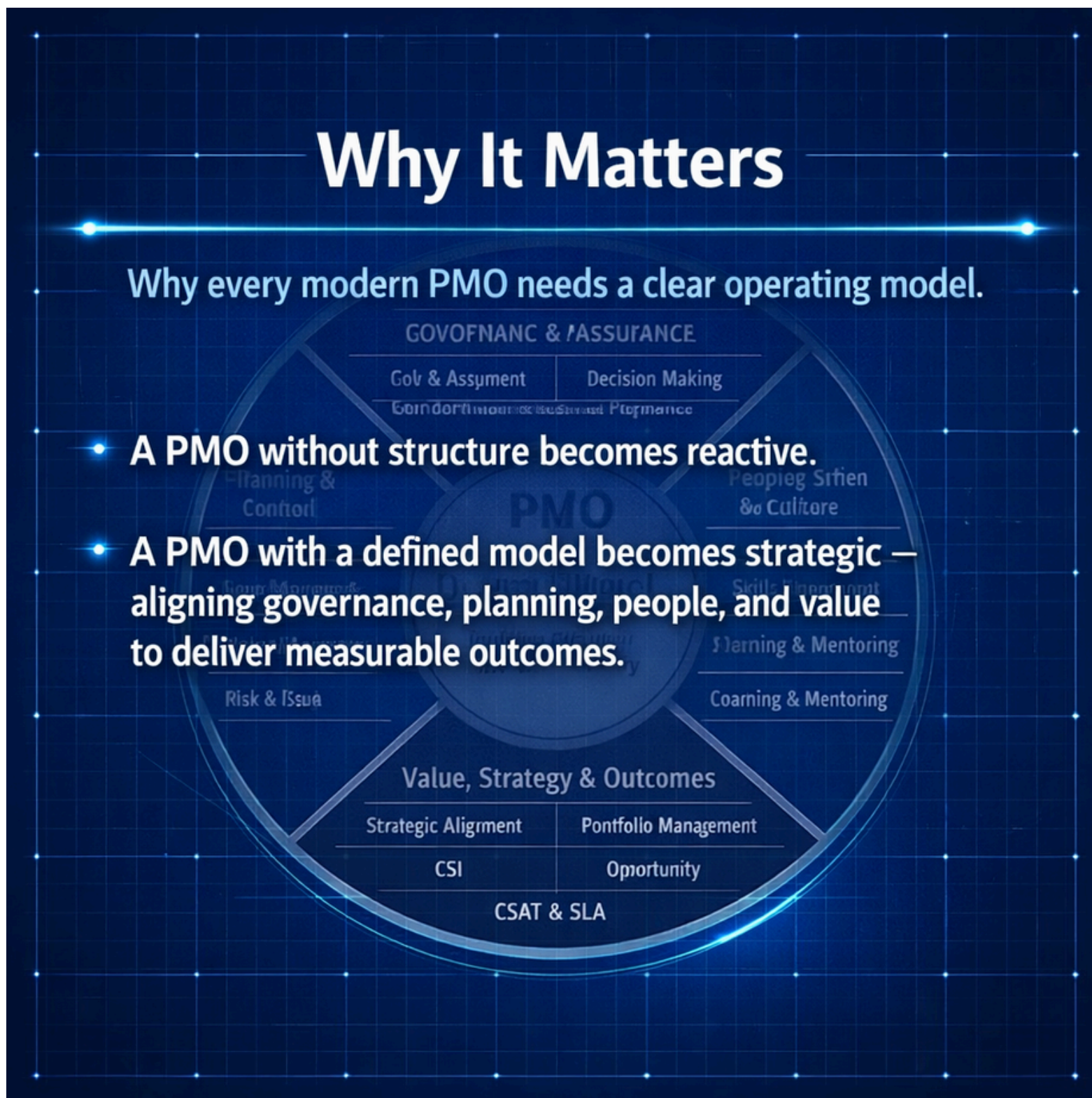


# The PMO Operating Model Wheel



*Enabling predictable, value-driven delivery across your portfolio.*

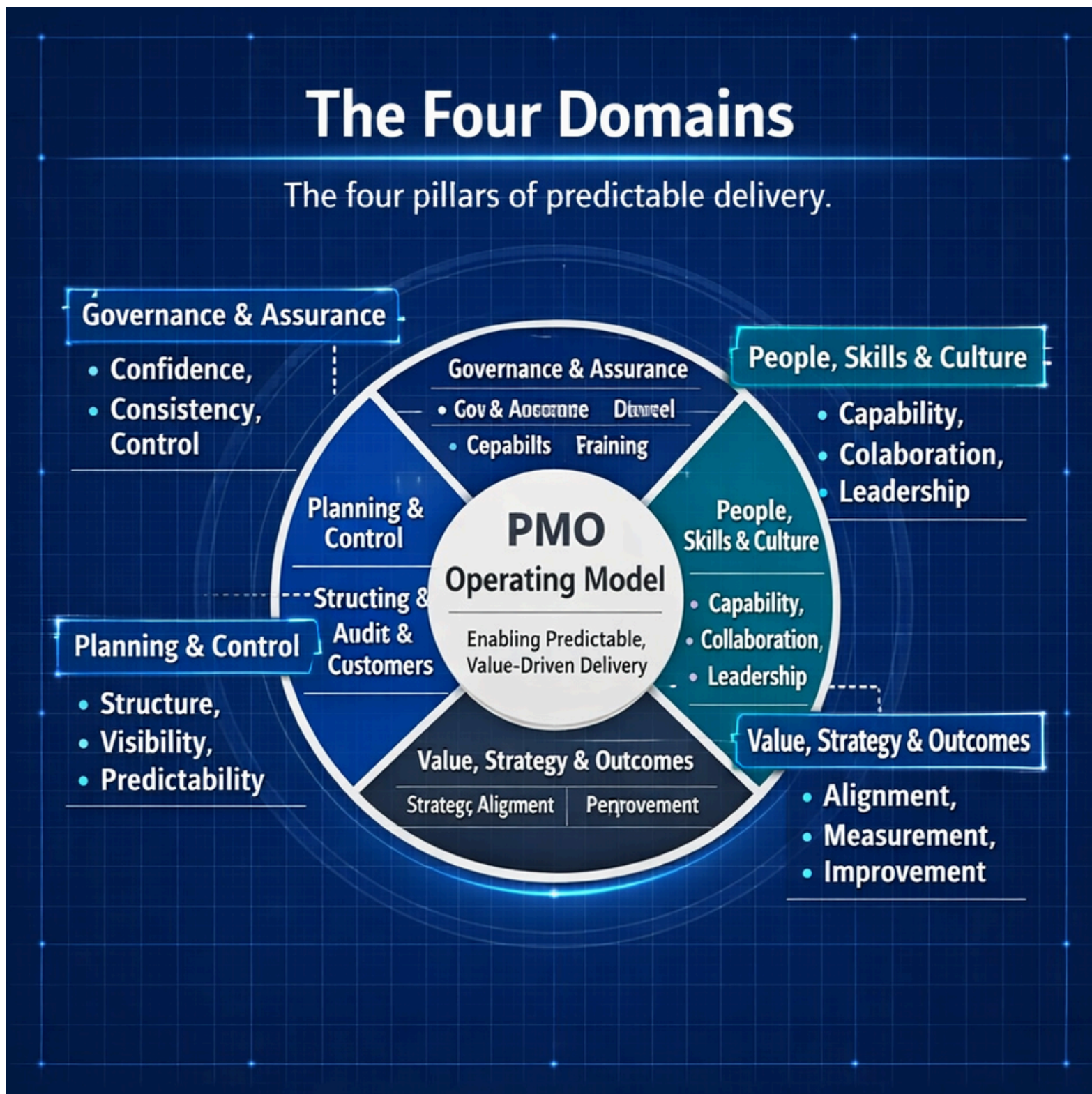
# Why It Matters



***Why every modern PMO needs a clear operating model.***

- A PMO without structure becomes reactive.
- A PMO with a defined model becomes strategic — aligning governance, planning, people, and value to deliver measurable outcomes.

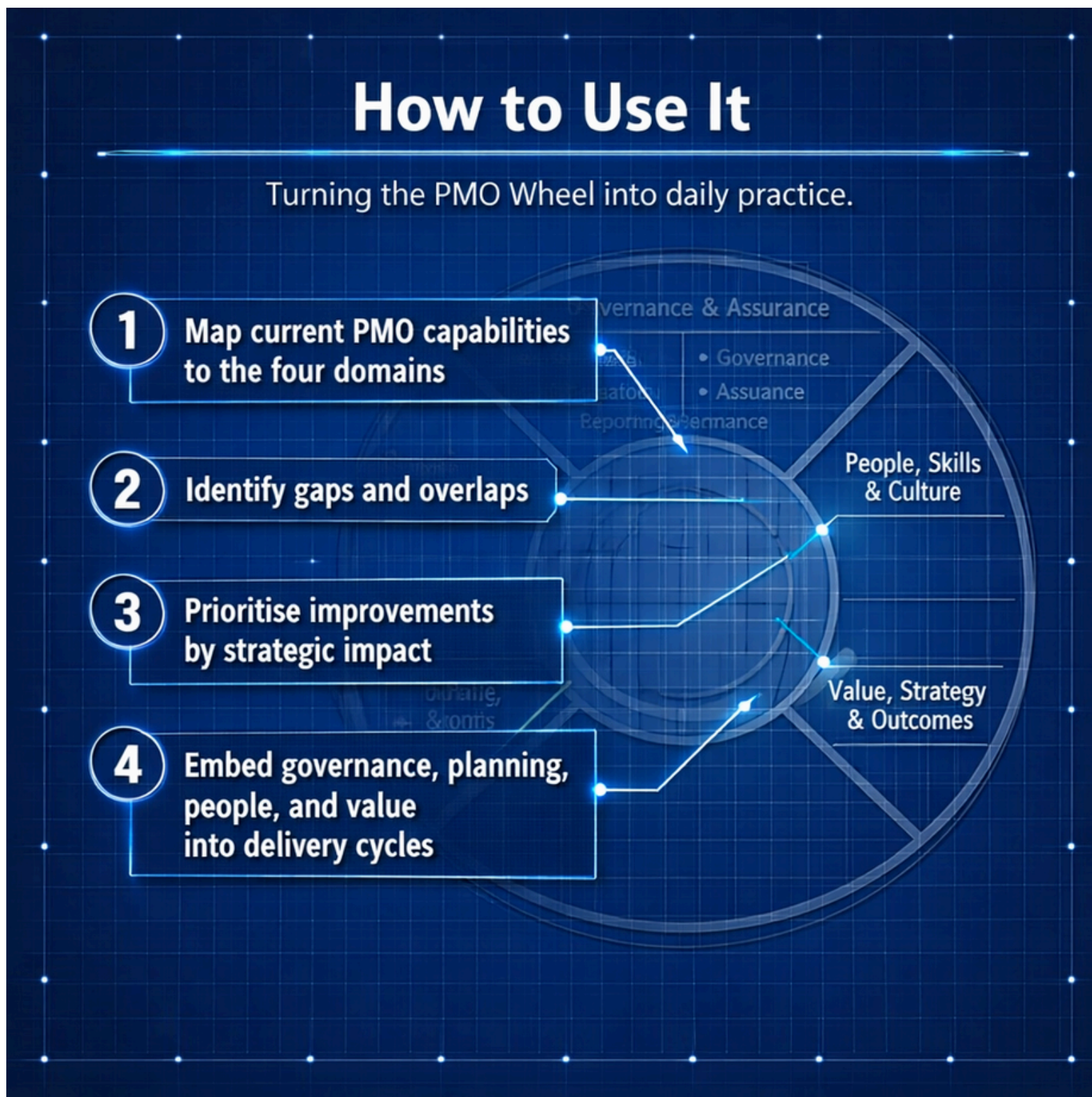
# The Four Domains



***The four pillars of predictable delivery.***

- Governance & Assurance – Confidence, consistency, control
- Planning & Control – Structure, visibility, predictability
- People, Skills & Culture – Capability, collaboration, leadership
- Value, Strategy & Outcomes – Alignment, measurement, improvement

# How to Use It

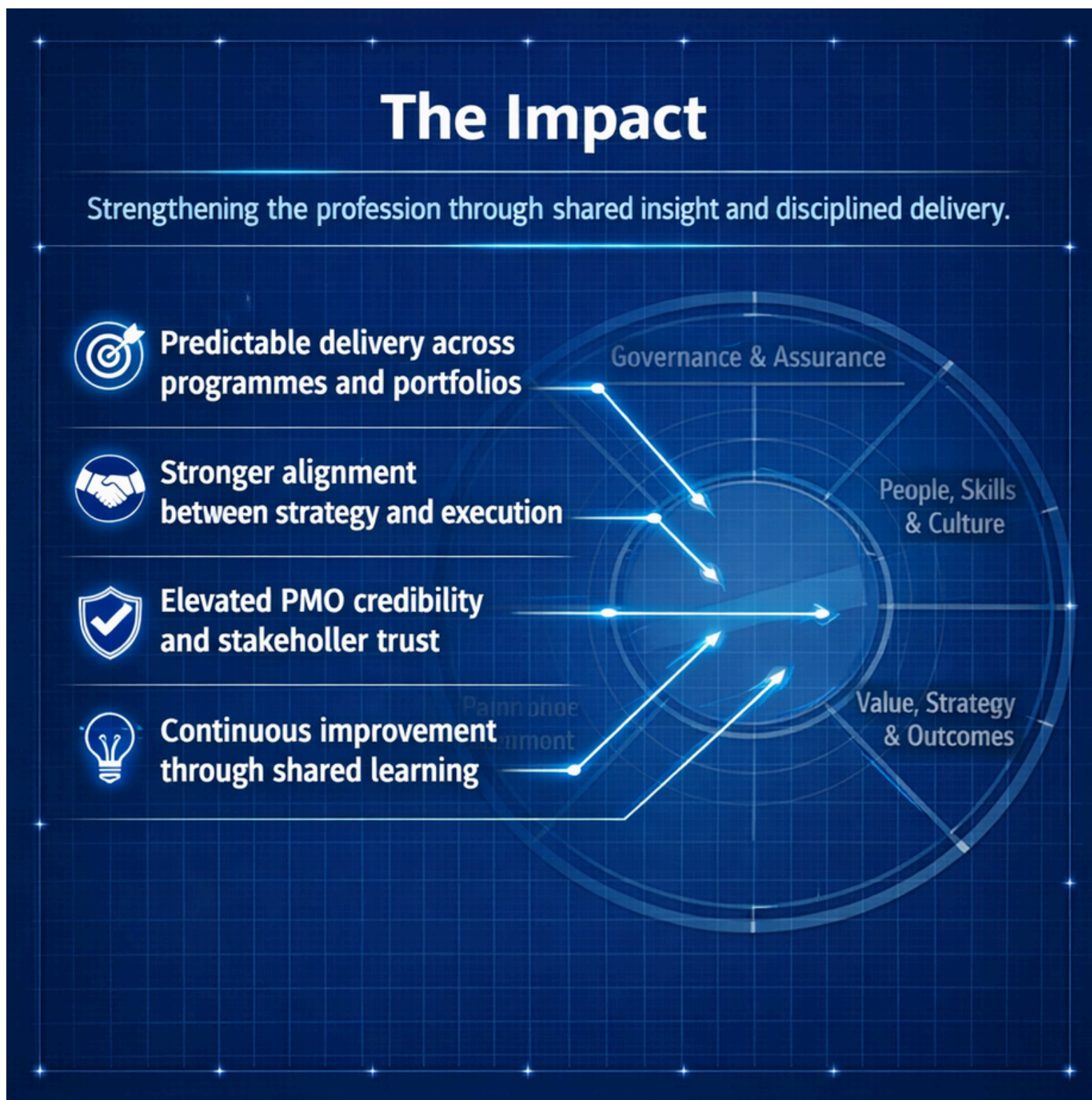


***Turn the wheel into a strategic tool.***

*Use it to:*

- Communicate PMO purpose
- Define scope and services
- Support maturity assessments
- Anchor executive conversations

# The Impact



## From reporting function to strategic partner.


***When the PMO operates through these domains, it drives:***

- Predictable delivery
- Stakeholder confidence
- Continuous improvement
- Organisational value

# Download the Model

**Download the Model**

Access the full PMO Operating Model PDF and supporting resources.



- Includes detailed quadrant definitions, implementation guidance, and maturity assesment criteria.
- Optimized for LinkedIn, presentation decks, and PMO training materials.

**Download the full visual framework and start building your PMO strategy today.**

**Ready to adopt the PMO Wheel?**

👉 *Download the PMO Wheel (PDF)*

# Helping organisations deliver predictable, value-driven outcomes.

**Thank You for Joining the Conversation**

Scan to connect • Follow for more leadership insights.



**Connect • Learn • Lead**



## Tim Williams Consulting Ltd